



## ACUSTICA F58

*Gio Minelli & Marco Fossati*



Established in the Venetian countryside in 1961, Fabbian is one of the premier Italian lighting manufacturers operating in the modern design market with the design and manufacturing of lighting fixtures for commercial, residential, and custom needs. This rich history, combined with traditional Italian craftsmanship and the finest quality materials, keeps Fabbian a prominent brand internationally recognized in the architectural and design communities worldwide.

Fabbian continues to innovate by continuously researching new materials, finishes, styles, and aesthetics. Fabbian's factory is based in the Veneto region of Italy, and it has access to a vast network of local glass and metal artisans to ensure that the highest quality expectations and safety requirements are met.

# ACUSTICA F58

*Gio Minelli & Marco Fossati*





F58 Acustica was inspired by a Drum Cymbal, the antithesis of auditory comfort.

The large and thin lampshade is designed to absorb surrounding sounds and create a high level of acoustic comfort.





Offered in pendant or wall/ceiling fixture form in five standard colors, an array of custom colors, and three large-scale diameters, Acustica is an ideal solution for new construction and retrofitting of public spaces, such as restaurants, luxury offices, and large waiting areas that require refined design and acoustic solutions.





Acustica pendants' shades can adjust from level to inclined positions for dynamic and creative arrangements around its central fixed light source.

Acustica Wall/Ceiling fixtures add geometric design elements while providing acoustic comfort and ambient illumination.



## Pendant Technical Specifications

### Light Source:

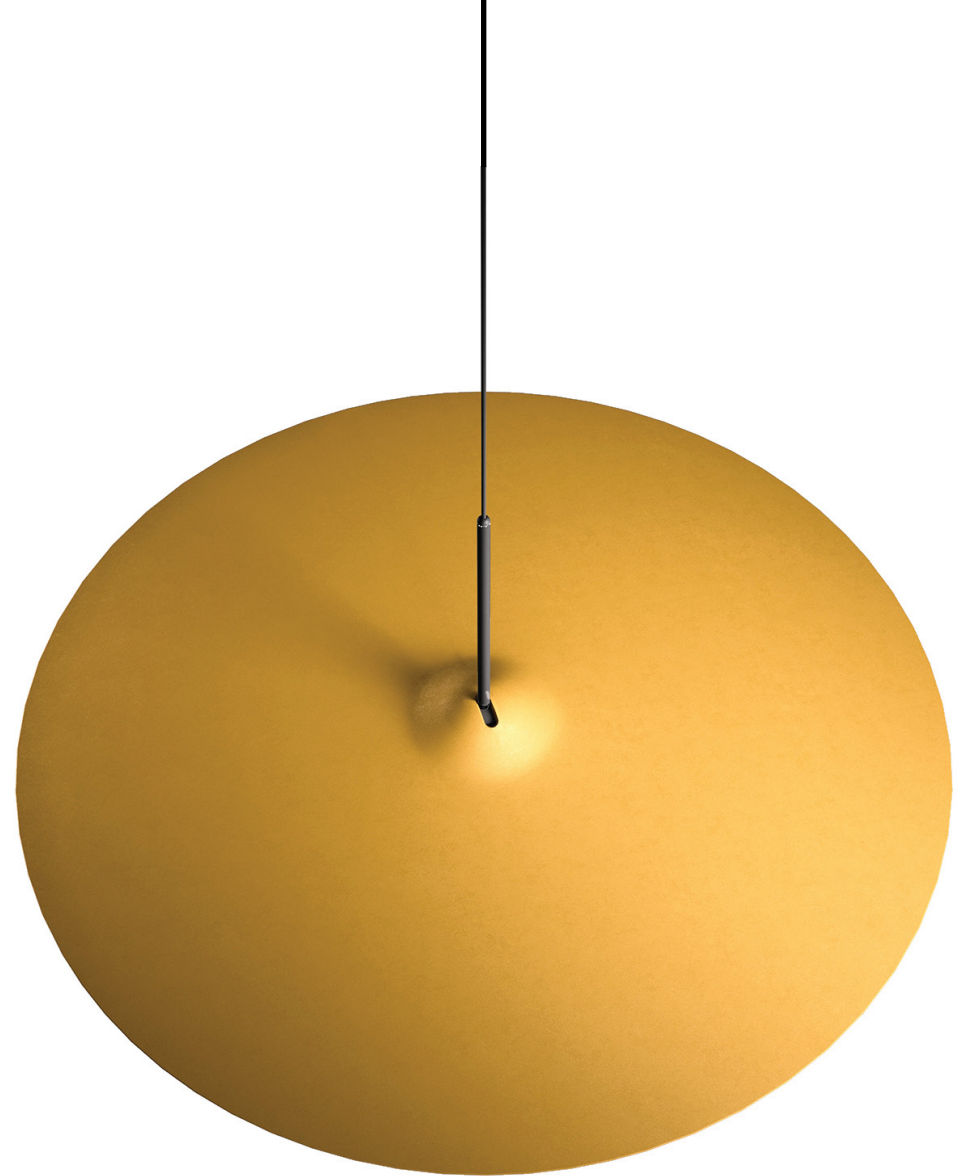
- 18W LED Source, 90+ CRI
- CCT: 3000K, 2700K
- Lumens: 2018 Source, 1604 Delivered
- 50,000 Hours L90/B10
- Flicker Free, 3-MacAdam Step Binning

### Electrical:

- 120V-277V, UNV Driver
- 0-10V Dimming

### Mechanical:

- IP40, DRY Rated
- Shade: Recycled PET & Polyester Fiber
- Light: Black Aluminum with PMMA Acrylic Lens
- Sizes: 2' (5 pounds), 3' (9 pounds), 4' (13 pounds)





## Wall/Ceiling Technical Specifications

### Light Source:

2'

- 37W LED Source, 90+ CRI
- CCT: 3000K, 2700K
- Lumens: 1725 Delivered

3'

- 72W LED Source, 90+ CRI
- CCT: 3000K, 2700K
- Lumens: 3295 Delivered

50,000 Hours L90/B10

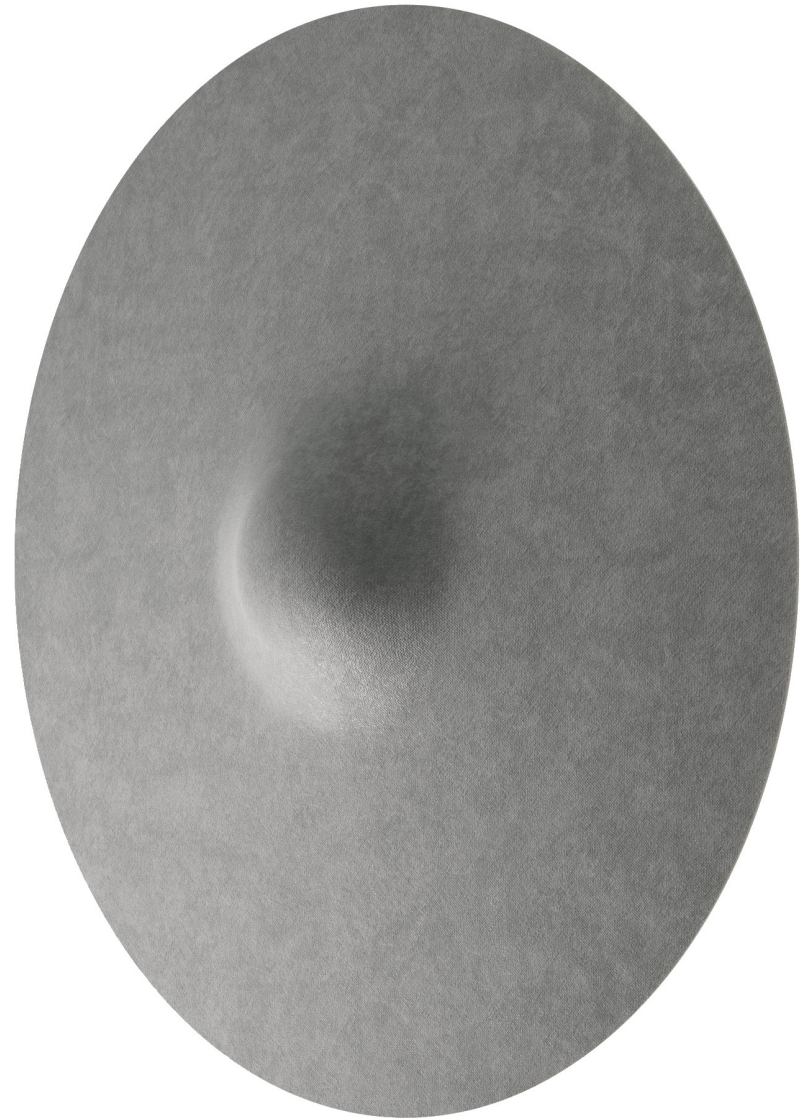
Flicker Free, 3-MacAdam Step Binning

### Electrical:

- 120V-277V, UNV Driver
- 0-10V Dimming

### Mechanical:

- IP40, DRY Rated
- Shade: Recycled PET & Polyester Fiber



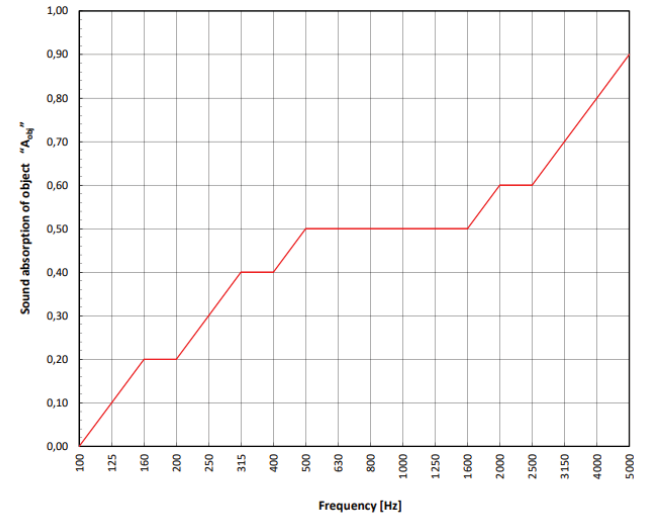


# Acoustic Testing

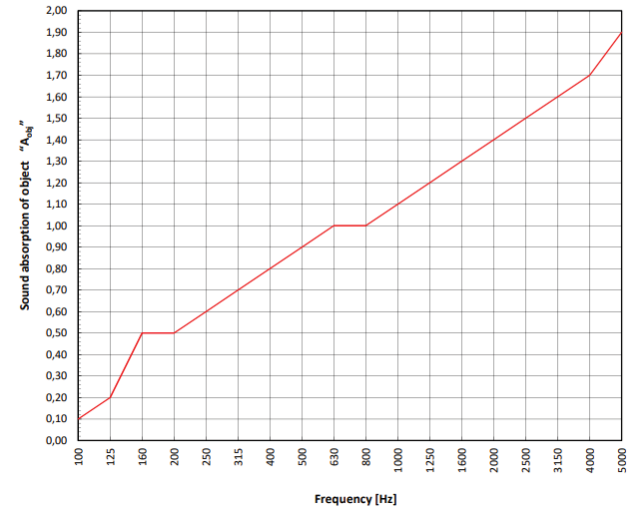


# ASTM C423-17 Testing Report

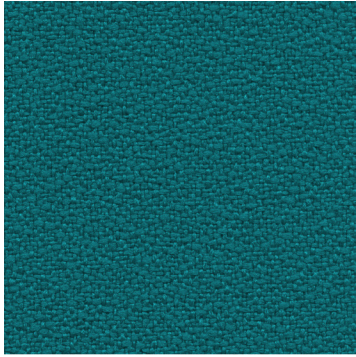
**3' Model**  
ONE-THIRD-OCTAVE BAND  
SOUND ABSORPTION OF OBJECT "A\_obj"



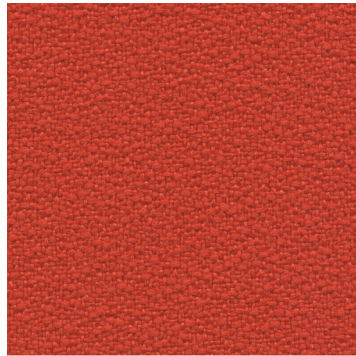
**4' Model**  
ONE-THIRD-OCTAVE BAND  
SOUND ABSORPTION OF OBJECT "A\_obj"



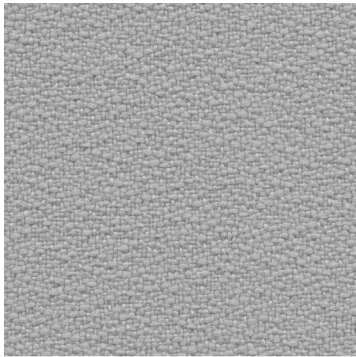
## 5 Standard Colors



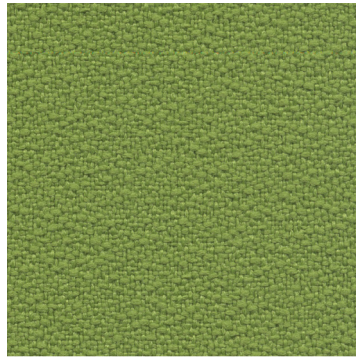
FAB 06 - Ocean 7023



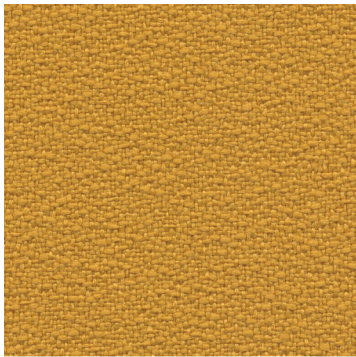
FAB 32 - Coral 3094



FAB 37 - Cement 8027



FAB 43 - Lawn Green 7011



FAB 47 - Honey 3083

## 47 Custom Color Options

5 piece minimum per color











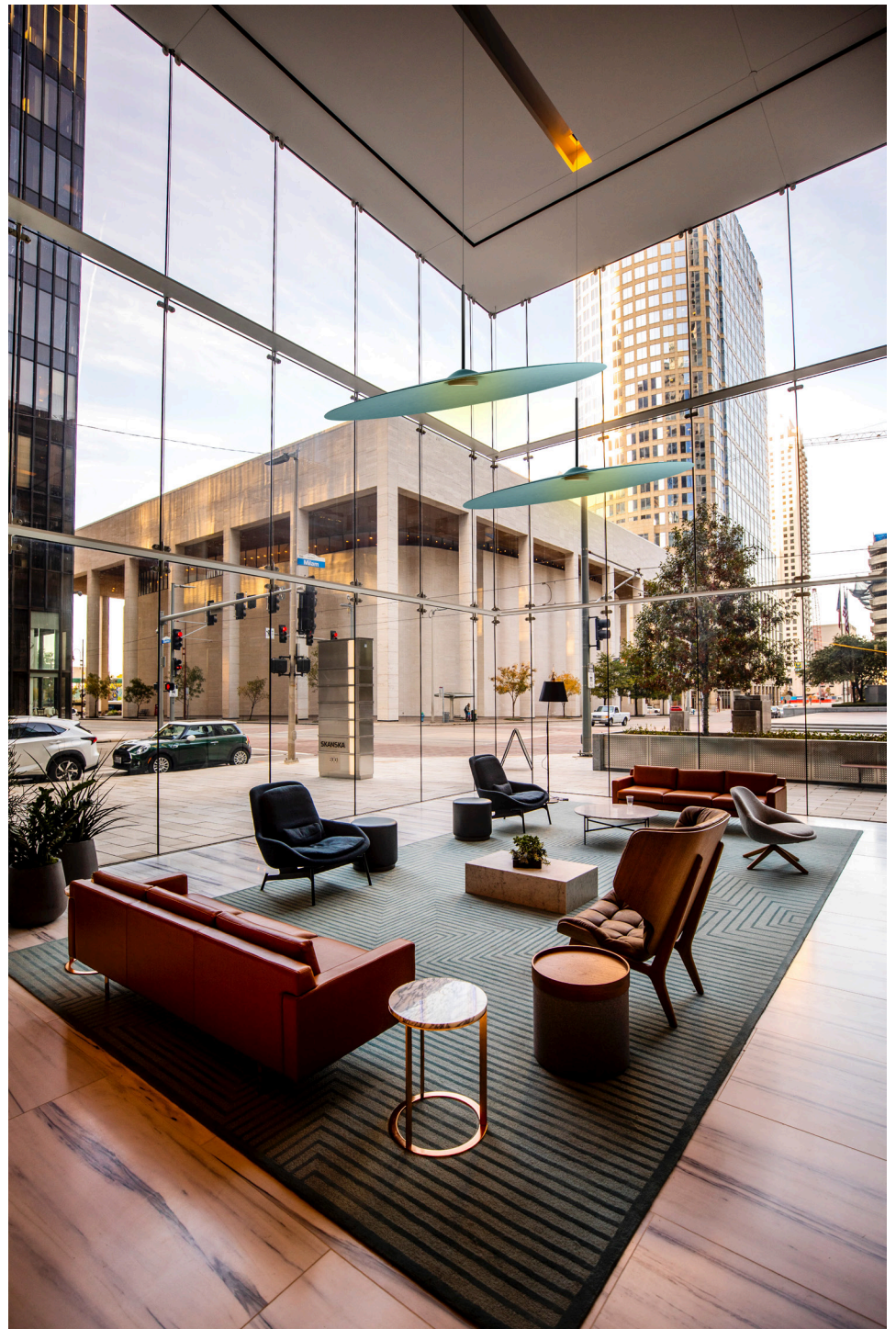
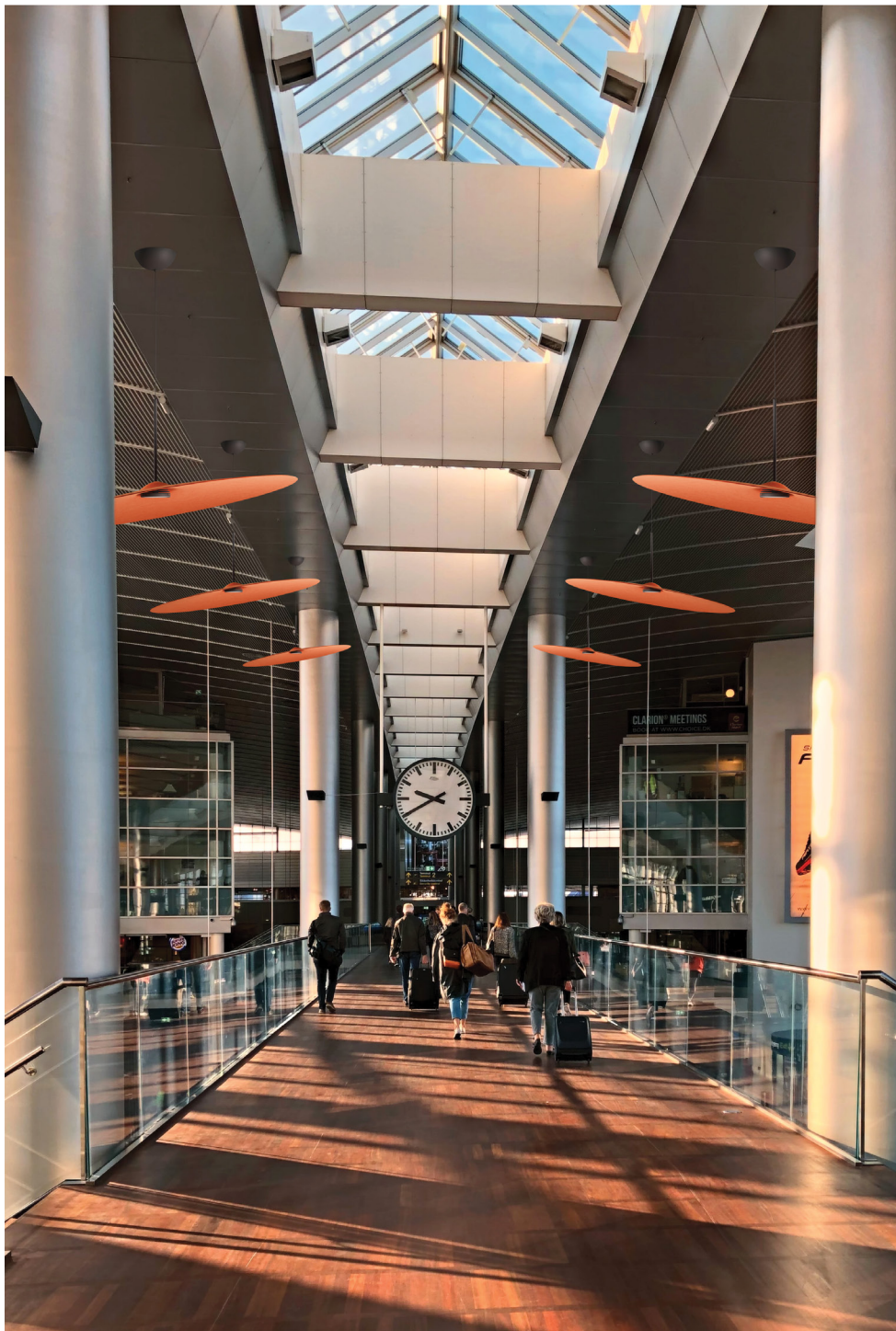














fabbian.us

